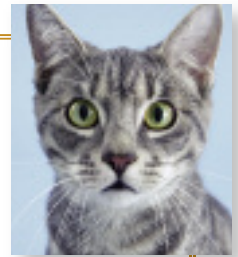


Determining Pain Scores in Cats

Wendy Baltzer, DVM, PhD, Diplomate ACVS
Oregon State University



Visual & Interactive Analog Scales

Criteria Type	Behavior of Cat	Score
Simple descriptive	Cat approaches observer	1
	As observer approaches, cat looks at observer but does not move	2
	No movement or acknowledgement of observer	3
	Cat turns away from observer but does not move away	4
	Cat gets up and moves away from observer	5
Interactive visual analog (cat palpated in painful area)	Cat does not move but turns to look at observer and area being palpated	1
	Cat does not turn away from the observer but may arch back or move the painful area away	2
	Cat withdraws body area away from observer but does not get up and move away	3
	Cat stands and moves away from observer or becomes aggressive	4

Simple descriptive score:

1 = little to no pain; 2 = mild pain; 3 & 4 = moderate pain; 5 = severe pain

Interactive visual analog score:

1 = little to no pain; 2 = mild pain; 3 = moderate pain; 4 = severe pain

Adapted from **Subjective and objective measurements of postoperative pain in cats**. Cambridge AJ, Tobias KM, Newberry RC, et al. *JAVMA* 217:685-690, 2000, with permission.

This page may be downloaded from cliniciansbrief.com and printed for use in your clinic.